



# The Wildcat

August 13, 2021

Deadline for the August 20, 2021 Wildcat will be  
Wednesday, August 18 at 8:30 A.M.

Please call the Attendance Line  
982-3950 - Option #1  
if your child will be absent or tardy from school.  
Office #982-3975  
Jeffco Web Page:  
<http://westridge.jeffcopublicschools.org/>

**Monday, August 16<sup>th</sup>**

2:00 – 3:30 Meet & Greet

**Tuesday, August 17<sup>th</sup>**

8:30 – 3:00 1<sup>st</sup> Day of School for Grades 1-5

8:00 – 3:00 Kindy Orientation appointments, no class for Kindies

**Wednesday, August 18<sup>th</sup>**

8:00 – 3:00 Kindy Orientation appointments, no class for Kindies

**Thursday, August 19<sup>th</sup>**

8:30 – 3:00 First Day of School for Kindies

8:15 – 9:00 Tea & Tissues for new Kindie families in front courtyard

## Westridge is Driven to be Better Together

Dear Westridge Students, Families, and Community:

We are so excited to begin the school year together. Our motto this year is, "Driven to be better together." Having this at the forefront of our minds will remind us of our focus each day.

As always, safety is a main priority at Westridge. Last year our school had great success utilizing the outdoor spaces for lunches and learning experiences. As a result of this positive outcome, lunches will be held outside on all good weather days. Some learning may also take place outdoors, weather permitting.

One of our main goals this year is to be more intentional about the way we serve the needs of all students in order for children to realize their strengths and develop strategies to combat social emotional challenges when they arise.

**Meet and Greet:** Our Meet and Greet will take place on August 16, 2021 from 2:00-3:30

- Please note that visitors should wear a mask when entering the building
- We plan to keep things short and sweet so that we can get ready for the 1st day of school.
- It is time to drop off supplies too.
- We are extremely excited to meet and greet with you on Monday!

Driven to Be Better Together: Our team has been running so fast to get ready for our students. <https://youtu.be/2Zh7QpVEEUU> Literally! This shows the power of being a team that is Driven to Be Better Together.

Sincerely,  
Jon Stein, Principal

WELCOME NEW  
KINDY PARENTS!



Please plan to join us for  
Kindergarten Tea & Tissues  
Thursday, August 19, 2021  
8:15 - 9:00 am  
in the front courtyard.  
Meet Westridge Principal Jon Stein,  
members of our Westridge PTA,  
and other parents new to Westridge.

**MARK YOUR CALENDARS**  
**FOR OUR WESTRIDGE**  
**WELCOME BACK EVENT**

On August 16<sup>th</sup> we will be hosting our Meet and Greet Open House Event. Meet & Greet will take place in classrooms between the hours of 2:00 P.M. to 3:30 P.M. This time is solely dedicated as a drop in event for students and parents to meet their teacher and drop off school supplies. Families may arrive and leave at any time during this window of time.

**ASSESSMENT DAYS**  
**AUGUST 30th and SEPTEMBER 3rd**

\_\_\_\_\_As a result of the Colorado Basic Literacy Act and the need to assess each student's reading abilities with individualized assessments, it is necessary that we schedule our students for individual assessment times on Monday, August 30th and Friday, September 3rd. All 4th and 5th grade students will come for MAP testin on one of those two dates. MAP testing will be a full school day.

There will be no regular school on either August 30th or September 4th. We understand that this might be inconvenient for some parents, but in order to be in compliance with the Literacy Act, these individual assessments are necessary. We thank you for your cooperation in regard to these assessment days.

Be watching for a Sign Up Genius in next Friday's Wildcat, August 20th, to sign up for your child's assessment time.

**PARENT/TEACHER CURRICULUM NIGHT**

On September 21, 2021 we will have Curriculum Night. At this event, parents will meet the teacher and learn about curriculum and classroom expectations.



**WESTRIDGE ELEMENTARY HAS A FACEBOOK PAGE!**

Please consider joining our Westridge Elementary page! We use this platform as another means of communicating with you. <https://www.facebook.com/groups/257696868179603/>

For security reasons this will be a closed group, so only families who are a part of Westridge will be allowed to join. We're excited to start sharing school events and events that happen throughout the school!



## Westridge Elementary 2021 - 2022 Fee Sheet

Please note applicable fees below. An explanation for each fee can be found in a more detailed document available upon request. All fees provide students with services / materials that become their property. You may pay your child's fees beginning August 2, 2021 through Jeffco Connect, at: <https://jeffcoconnect.jeffco.k12.co.us/>; or bring a check or credit card with this form to the school office between August 2 and August 9, 2021.

Student # \_\_\_\_\_

Student Name: \_\_\_\_\_ Grade: \_\_\_\_\_  
 (Please Print) (Last Name) (First Name)

Fee Name:	Kindy	Grade 1	GT 1	Grade 2	GT 2	Grade 3	GT 3	Grade 4	GT 4	Grade 5	GT 5
Field Day Award	1.50	1.50	1.50	1.50	1.50	1.50	1.50	1.50	1.50	1.50	1.50
Art Clay & Art Sketchbook Fee	5.00	5.00	5.00	5.00	5.00	5.00	5.00	5.00	5.00	5.00	5.00
Agenda Book								3.00	3.00		
District Technology Use Fee	25.00	25.00	25.00	25.00	25.00	25.00	25.00	25.00	25.00		
Westridge Technology Fee	25.00	25.00	25.00	25.00	25.00	25.00	25.00	25.00	25.00		
Personalized Technology Use Fee										50.00	50.00
Math Expressions Activity Book	23.00	23.00	23.00	23.00	23.00	23.00	34.00	34.00	34.00		
Math Expressions Homework & Remembering	3.50	5.25	5.25	5.25	5.25	7.00	5.25	5.25	5.25	5.25	5.75
Recorder Fee						4.50	4.50				
Scholastic Magazine	6.00	6.00	6.00	6.00	6.00	6.00					10.00
Storyworks							8.75	8.75	8.75	8.75	
Raz Kids	3.75		3.75	3.75	3.75						
Reading A-Z	3.25										
Quick Word Handbooks		2.00	2.00	2.00	2.00						
<b>TOTAL FEE DUE AUGUST 6, 2021:</b>	<b>\$96.00</b>	<b>\$92.75</b>	<b>\$96.50</b>	<b>\$96.50</b>	<b>\$96.50</b>	<b>\$97.00</b>	<b>\$109.00</b>	<b>\$107.50</b>	<b>\$107.50</b>	<b>\$70.50</b>	<b>\$72.25</b>

*\* The principal shall grant a waiver for students eligible for free or reduced lunch under the National Income Poverty guidelines. If other hardship conditions exist the principal should be contacted. Purchases of non-instructional goods and services, such as yearbooks or photos, are not included in this waiver policy. School fees have been approved by the school decision making group and the community superintendent.*

**Total amount due: \$ \_\_\_\_\_**

**To make payment with credit card, please visit Jeffco Connect at  
<https://jeffcoconnect.jeffco.k12.co.us/>**

**Or you may make check payable to Westridge Elementary School  
 (Checks must be for the exact amount - change cannot be given.)**

**In order to make partial payments,  
 Please contact the Principal's Secretary,  
 Lisa Skidmore, at 303-982-3975, or voice mail 303-982-3925**



## 2021 – 2022 Westridge Elementary School Calendar

Teachers Report	August 10
Meet & Greet, 2:00 -3:30 PM	August 16
First Day of School	August 17
Modified Contact Day (Student Assessment Day)	August 30
Modified Contact Day (Student Assessment Day)	September 3
No School – Labor Day	September 6
Conferences, regular school day (conf. 3:30 – 8:00)	October 4
Conferences regular school day (conf. 3:30 – 8:00)	October 6
Non-Contact Day	October 7
No School, Fall Break	October 8
Halloween Parade & Parties (TBD)	October 31
End of 1 <sup>st</sup> Trimester	November 12
Report Card Distribution	November 19
No School - Thanksgiving Holiday	November 22 –26
Enroll Jeffco Opens for 2022-2023	December 8
No School - Winter Break	December 22 – January 3
No School –Teacher Work Day	January 4
Students Return	January 5
No School – Martin Luther King Day	January 17
No School – President’s Day	February 21
End of 2 <sup>nd</sup> Trimester	February 25
Report Card Distribution	March 4
Conferences, regular school day (conf. 3:30 – 8:00)	March 15
Conferences, regular school day (conf. 3:30 – 8:00)	March 17
No School – Spring Break	March 21 – March 25
Modified Contact Day (Student Assessment Day)	April 25
Modified Contact Day (Student Assessment Day)	April 29
End of 3 <sup>rd</sup> Trimester	May 25
Last Day for Students / Report Cards (12:30 dismissal)	May 25
Last Teacher Work Day	May 26

**WESTRIDGE ELEMENTARY**  
**2021-2022 SUPPLY LIST**

Copies of the 2021-2022 school supply lists are available in the school office or can be found on our website under [Supply Lists](#) . If you pre-ordered a Back-to-School Supply Pack through EPI and our PTA, those packs will be in your child's classroom at the Meet & Greet on August 16<sup>th</sup>.

**SCHOOL HOURS**

Westridge school hours are from 8:30 A.M. to 3:00 P.M. We will continue to have a soft start in the mornings where students may arrive between 8:15 A.M. - 8:25 A.M. All students report to their teacher's exterior classroom door. Students will be considered tardy if not in their classrooms by 8:30 A.M. Tardy students will need to check in at the main office before going to their classrooms.

School is dismissed at 3:00 P.M. After school, students need to go directly home unless staying for a school sponsored enrichment program or have made prior arrangements to meet with a teacher. There is limited after school supervision.

*Westridge Elementary After School Enrichment Programs*

- Monday: Imagine Art  
Beginning September 20, 3:00 - 4:00 pm
- Tuesday: Science Matters in America  
Beginning September 14, 3:00 – 4:00 pm
- Colorado Taekwondo Institute, in gym  
Beginning in September, 3:00 – 4:00 pm
- Wednesday: Strategic Kids Chess Class  
Beginning September 8, 3:05 – 4:05 pm
- Thursday: Strategic Kids Lego Class  
Beginning September 16, 3:05 – 4:05 pm
- Kid Stage, in music room  
Beginning September 9, 3:00 – 4:30 pm

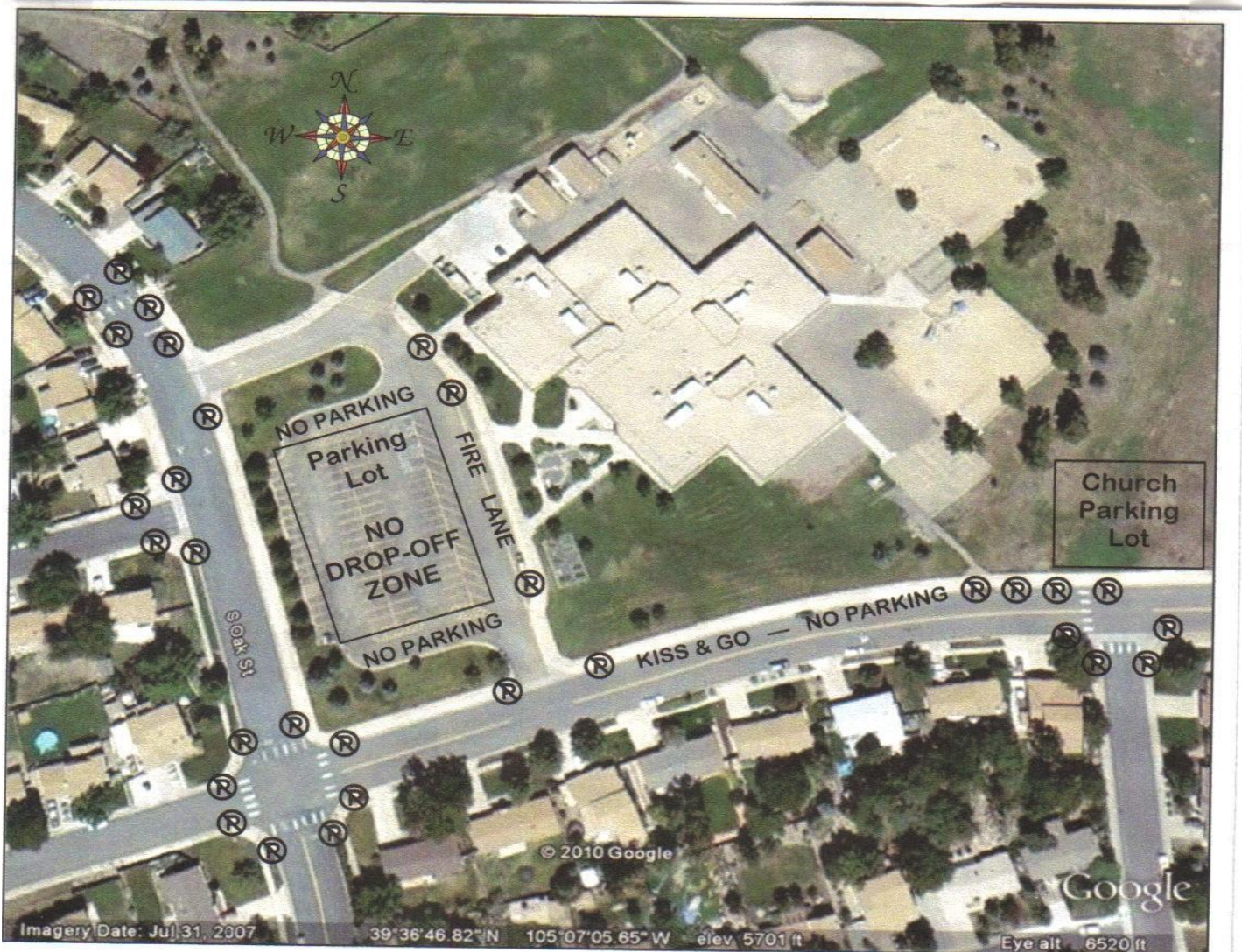


## FOR THE SAFETY OF ALL CHILDREN

1. **NO U-TURNS ON ALAMO** from either side of the street. This is a posted county regulation.
2. **WATCH YOUR SPEED.** Please remember, this is a school zone. The speed limit is 20 miles per hour.
3. **PULL FORWARD AT KISS & GO.** Please pull as far to the west as possible. This may mean going around cars that are dropping children at the east end. Do not stop and let your child(ren) out where there are cones.
4. **KISS & GO IS FOR QUICK DROP-OFF.** Once your child(ren) has exited the car, you need to leave the kiss & go area. You may not sit there and watch your child walk to class. As the driver, you are not to exit the car. Children must exit the car on the passenger side. If you cannot adhere to these rules, you need to make alternate plans for drop-off.
5. **NO DROP-OFF IN THE PARKING LOT.** If you are entering the parking lot, you must park in a legal parking space and walk your child(ren) across to the sidewalk in front of the school. Children may not walk across the parking lot and/or through the bus zone without an adult.

### COLORADO STATE LAW PROHIBITS PARKING IN THE FOLLOWING PLACES:

- a. On a sidewalk
- b. Within an intersection
- c. On a crosswalk
- d. Within 5 feet of a public driveway
- e. Within 15 feet of a fire hydrant
- f. Within 20 feet of a crosswalk
- g. Within 30 feet of any traffic signal, stop sign or yield sign.





## Kids Love These Programs!

Foothills Park & Recreation District's Children's Programs have been providing Before & After School Care for over 35 years and are licensed by the Colorado Department of Human Services. We are committed to providing families with safe and healthy recreational and educational opportunities and strive to provide a safe, caring, nurturing environment by employing the highest provider standards. These programs are designed to promote and build self-esteem, facilitate positive development through healthy interactions and to provide a continuum of care to assist children in becoming positive and healthy individuals.



All of our school age care programs provide children with fun enrichment activities that stimulate learning and imagination, encourage physical skill development and promote positive social skills.

Come play a game of chess, capture the flag, basketball, paint a collage, have some fun cooking with a friend, be an actor/actress for the day or just relax and do some reading or homework. The activities are endless.

# DATES TO REMEMBER!

### WINTER BREAK CAMP

Information will be available in **OCTOBER 2021**

### SPRING BREAK CAMP 2022

Information will be available in **JANUARY 2022**



[www.foothills.org](http://www.foothills.org)  
JUNE 2021

# Before & After School Programs

## 2021 - 2022 School Year

Enrollment begins  
**JULY 6**



**Fun enrichment activities that encourage learning & imagination!**



## Program Information

Foothills Children's Programs offers Before & After School Programs for children in Full Day Kindergarten through Grade 5 or 6, depending on the oldest grade offered within the elementary school. Programs operate Monday through Friday from 6:45 a.m. until school commences and from school dismissal until 6 p.m. (We do not provide preschool care or wrap around care for ½ day Kindergarten.)

We offer year round programs and provide full day camps on most student non-contact days, vacation breaks and during the summer.

## Prices & Locations

An annual non-refundable Enrollment Fee (\$60/child or \$80/family) is required at the time of enrollment. This fee is transferable from the 2021 Summer Camp Program. Annual Enrollment Fee covers programming from June 1, 2021 to May 31, 2022.

Per Day/Tuition is based on the number of days a child attends. (NOTE: Prices are subject to change based on school bell time changes.)

Prices Apply to Youngest Child in the Family Enrolled in Program. NOTE: Additional siblings enrolled receive a discount of 5% OFF tuition fees.				
	Time of Care ▶	Before School Care	After School Care	Full Day Care
Columbine Hills Dutch Creek Governor's Ranch Mt. Carbon (**Ridge) Ute Meadows Westridge	Daily Rate	\$9.50	\$15.50	\$37
	Drop-in Rate	\$12.50	\$18.50	\$45
Deviny Hutchinson Normandy Peiffer Powderhorn (**Ridge) Stony Creek	Daily Rate	\$11.50	\$13.50	\$37
	Drop-in Rate	\$14.50	\$16.50	\$45
Collegiate Academy	Daily Rate	\$7.50	\$16	\$37
	Drop-in Rate	\$10.50	\$19	\$45

\*\* For MT. CARBON and POWDERHORN, Before & After School Programs will be held at: Ridge Recreation Center (6613 S. Ward Street, Littleton, 80127)

### MONTHLY CALENDAR SELECTION:

Calendars open at 8 a.m. on the 15<sup>th</sup> of each month for the upcoming month. Parents/Legal Guardians are encouraged to select schedules no later than the last day of the month to receive the early bird rate. Any days selected after that time will be charged an additional fee per session.

Foothills Children's Programs does not issue credits, refunds or transfers for any missed days of care.

Drop-in care is available (if space allows) for an additional fee per child per session.

Please see the Parent Handbook for additional payment policies & procedures. Parent Handbooks are available at all program sites and at [www.ifoohills.org](http://www.ifoohills.org).

## To Enroll

Parents are required to complete and submit the necessary Enrollment Forms on-line at <http://www.ifoohills.org/schoolage> for each child a minimum of 48 business hours prior to attendance. (To attend care on the 1<sup>st</sup> day of the school year, August 17, 2021 – Enrollment must be completed and paid for by August 9, 2021).

Enrollments received after 5 p.m. will be considered the next day of business.

Parents are required to submit the following, prior to child's attendance:

- Annual non-refundable Enrollment Fee (\$60/child or \$80/family)
- Immunization Records for each child
- Physician's Report for children 7 and under only (form located on our website)
- Permission for Administration of Medication if necessary (forms located on our website)

## Contact Us

For more information about Before & After School Programs, please call 303-409-2511.

OR

Email us at [childrensprogram@fhprd.org](mailto:childrensprogram@fhprd.org)

