



The Wildcat

July 30, 2021

Deadline for the August 20, 2021 Wildcat will be
Wednesday, August 18 at 8:30 A.M.

Please call the Attendance Line
982-3950 - Option #1
if your child will be absent or tardy from school.
Office #982-3975
Jeffco Web Page:
<http://westridge.jeffcopublicschools.org/>

Monday, August 16th

2:00 – 3:30 Meet & Greet

Tuesday, August 17th

8:30 – 3:00 1st Day of School for Grades 1-5

8:00 – 3:00 Kindy Orientation appointments, no class for Kindies

Wednesday, August 18th

8:00 – 3:00 Kindy Orientation appointments, no class for Kindies

Thursday, August 19th

8:30 – 3:00 First Day of School for Kindies

8:00 – 9:00 Tea & Tissues for new Kindie families in front courtyard



#Westridge is Driven to Be Better Together!

Welcome to the 2021-22 School Year. I hope that the summer season has allowed you time to enjoy the things and people you love. As we come together again for the start of the school year, I want to share with you a few things to keep in mind and to bring us together.

First, I am energized to return as Principal for my fourth year. The last eighteen months have been hard, but we have to lean into the silver lining of this pandemic too. Our commitment this year will focus on relationships, academic growth, social emotional support and strategy learning, and family engagement so that all of us feel loved, seen and heard.

Here is what we accomplished together since the Pandemic hit:

1. Our Make Your Voice Heard Data shows that we improved 5% in our ability to successfully communicate and stay connected.
2. 97% of Westridge Students shared through a survey that they feel safe and happy with their teachers. That matters!
3. All students have a device to use for learning.
4. All classrooms in the pods have new carpet
5. We have a real gym floor!
6. Our office is renovated for extra safety
7. Enrollment is back up to 430 from 388 last year!
8. Reading data in k-2 shows an increase of 30 percentage points from winter to the end the year.
9. New benches are on the way for enhanced outdoor seating for eating, friendship time and learning because of our amazing PTA.
10. Seven classrooms will receive new Mimeo board screens to enhance learning
11. We stayed connected!

As we launch this year, there will be more celebrations and more ways for students to grow and realize their talents. Our motto this year is Westridge is Driven to be Better Together. As a staff and community, we need to have the mindset this year to grow, continue to accept change and get better so that all students can be seen, loved and heard each day.

Family Engagement Resources to get ready for school:

- [FiveCs-How-Families-Can-Engage-With-Their-Children's-Learning.pdf](#)
- https://www.jeffcopublicschools.org/family_portal/family_engagement/family_resources
- Note: Once we know about COVID-19 Protocols, we will share those with you.



NEW STUDENT REGISTRATION

If you have neighbors who have recently moved into our neighborhood and have elementary-aged children, please ask them if they have registered their children for school. If they have not, please ask them to visit our school website, and register following the steps found under New Student / Kindergarten Registration.

It is a real benefit to all children when students are registered in time for us to plan for them. When we get a number of later registrants, it often requires that we hire an additional teacher and split up the classes with which we began school. Thanks for your help!

ONLINE REGISTRATION FOR RETURNING STUDENTS

Registration for returning Westridge Elementary students will be an online process beginning August 2nd through August 6th. Please visit our school website and register following the steps under Returning Student Registration. The district has streamlined the registration process this year by placing links to fee payments and SchoolCafe' payments all in Jeffco Connect.

- 1) Update student information and agreements in [Jeffco Connect](#) as well as update contact information. It is imperative that parents keep their contact information up to date in [Jeffco Connect](#). Parents without computers or internet access are asked to contact the school office for assistance.
- 2) Pay School Fees in Student Fee Payment link on left side of Jeffco Connect site. Please be sure to "select all" to capture all fees associated with your student. If you do not wish to take advantage of the online system, fee payments can be made at the school during registration, August 2 – August 9, 2021. A copy of the Westridge Fee Sheet showing all grade level fees is attached to this newsletter.
- 3) All School lunches will be provided free of cost this year, but students may purchase additional A la carte options. Credits for these purchases may be made via the School Café' website.
- 4) If applicable, when completing the Free and Reduced Price Meal Application, families have the option of consenting to the disclosure of the application information to waive school district/program fees. This application is found here: <http://www.jeffcoschoolfood.org/free-reduced>

FOOD AND NUTRITION SERVICES

Jeffco Food & Nutrition menus can be found on SchoolCafe'! Parents can create an account, make payments, fill out a Free & Reduced meal program application, or view menus for any Jeffco school. Menus can be found here: <http://www.jeffcoschoolfood.org/menus>

MARK YOUR CALENDARS **FOR OUR WESTRIDGE** **WELCOME BACK EVENT**

On August 16th we will be hosting our Meet and Greet Open House Event. Meet & Greet is in the classroom between the hours of 2:00 P.M. to 3:30 P.M. This time is solely dedicated as a drop in event for students to meet their teacher and drop off school supplies.

PARENT/TEACHER CURRICULUM NIGHT

On September 21, 2021 we will have Curriculum Night where parents will come meet the teacher and learn about curriculum and classroom expectations.



WESTRIDGE ELEMENTARY HAS A FACEBOOK PAGE!

Please consider joining our Westridge Elementary page! We use this platform as another means of communicating with you. <https://www.facebook.com/groups/257696868179603/>

For security reasons this will be a closed group, so only families who are a part of Westridge will be allowed to join. We're excited to start sharing school events and events that happen throughout the school!



**Westridge Elementary
2021 - 2022 Fee Sheet**

Please note applicable fees below. An explanation for each fee can be found in a more detailed document available upon request. All fees provide students with services / materials that become their property. You may pay your child's fees beginning August 2, 2021 through Jeffco Connect, at: <https://jeffcoconnect.jeffco.k12.co.us/> ; or bring a check or credit card with this form to the school office between August 2 and August 9, 2021.

Student # _____

Student Name: _____ Grade: _____
 (Please Print) (Last Name) (First Name)

Fee Name:	Kindy	Grade 1	GT 1	Grade 2	GT 2	Grade 3	GT 3	Grade 4	GT 4	Grade 5	GT 5
Field Day Award	1.50	1.50	1.50	1.50	1.50	1.50	1.50	1.50	1.50	1.50	1.50
Art Clay & Art Sketchbook Fee	5.00	5.00	5.00	5.00	5.00	5.00	5.00	5.00	5.00	5.00	5.00
Agenda Book								3.00	3.00		
District Technology Use Fee	25.00	25.00	25.00	25.00	25.00	25.00	25.00	25.00	25.00		
Westridge Technology Fee	25.00	25.00	25.00	25.00	25.00	25.00	25.00	25.00	25.00		
Personalized Technology Use Fee										50.00	50.00
Math Expressions Activity Book	23.00	23.00	23.00	23.00	23.00	23.00	34.00	34.00	34.00		
Math Expressions Homework & Remembering	3.50	5.25	5.25	5.25	5.25	7.00	5.25	5.25	5.25	5.25	5.75
Recorder Fee						4.50	4.50				
Scholastic Magazine	6.00	6.00	6.00	6.00	6.00	6.00					10.00
Storyworks							8.75	8.75	8.75	8.75	
Raz Kids	3.75		3.75	3.75	3.75						
Reading A-Z	3.25										
Quick Word Handbooks		2.00	2.00	2.00	2.00						
TOTAL FEE DUE AUGUST 6, 2021:	\$96.00	\$92.75	\$96.50	\$96.50	\$96.50	\$97.00	\$109.00	\$107.50	\$107.50	\$70.50	\$72.25

** The principal shall grant a waiver for students eligible for free or reduced lunch under the National Income Poverty guidelines. If other hardship conditions exist the principal should be contacted. Purchases of non-instructional goods and services, such as yearbooks or photos, are not included in this waiver policy. School fees have been approved by the school decision making group and the community superintendent.*

Total amount due: \$ _____

To make payment with credit card, please visit Jeffco Connect at
<https://jeffcoconnect.jeffco.k12.co.us/>

Or you may make check payable to Westridge Elementary School
(Checks must be for the exact amount - change cannot be given.)
In order to make partial payments,
Please contact the Principal's Secretary,
Lisa Skidmore, at 303-982-3975, or voice mail 303-982-3925



2021 – 2022 Westridge Elementary School Calendar

Teachers Report	August 10
Meet & Greet, 2:00 -3:30 PM	August 16
First Day of School	August 17
Modified Contact Day (Student Assessment Day)	August 30
Modified Contact Day (Student Assessment Day)	September 3
No School – Labor Day	September 6
Conferences, regular school day (conf. 3:30 – 8:00)	October 4
Conferences regular school day (conf. 3:30 – 8:00)	October 6
Non-Contact Day	October 7
No School, Fall Break	October 8
Halloween Parade & Parties (TBD)	October 31
End of 1 st Trimester	November 12
Report Card Distribution	November 19
No School - Thanksgiving Holiday	November 22 –26
Enroll Jeffco Opens for 2022-2023	December 8
No School - Winter Break	December 22 – January 3
No School –Teacher Work Day	January 4
Students Return	January 5
No School – Martin Luther King Day	January 17
No School – President’s Day	February 21
End of 2 nd Trimester	February 25
Report Card Distribution	March 4
Conferences, regular school day (conf. 3:30 – 8:00)	March 15
Conferences, regular school day (conf. 3:30 – 8:00)	March 17
No School – Spring Break	March 21 – March 25
Modified Contact Day (Student Assessment Day)	April 25
Modified Contact Day (Student Assessment Day)	April 29
End of 3 rd Trimester	May 25
Last Day for Students / Report Cards (12:30 dismissal)	May 25
Last Teacher Work Day	May 26

IMMUNIZATIONS

According to Colorado Law, ([BOH Rule 6 CCR 1009-2](#)), all students attending Colorado schools are [required to be vaccinated](#) against certain diseases, unless an exemption is filed with the State of Colorado and with the school. Once the proper notification has been completed by school nurses, failure of parents/legal guardians to provide their child's proof of current immunization, or proof of in-process immunizations, or proof of exemptions "shall be denied attendance at school."

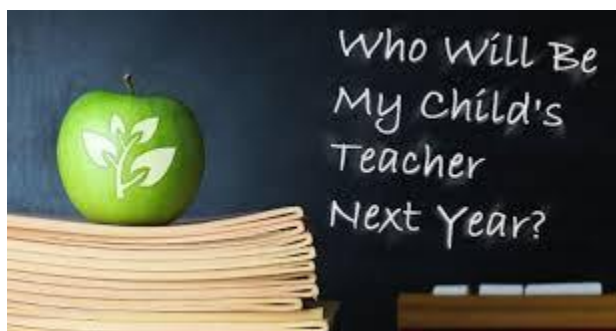
Parents who wish to have NON-Medical exemptions for their children must complete 1 of the 2 following requirements:

- a. Provide a [signed certificate of NON-Medical exemption](#) from their medical provider (physician) to the school or,
- b. Provide a certificate of online education module on vaccination produced by Colorado Department of Public Health and Environment (CDPHE) [Online Immunization Education Module](#) to the school.

MEDICATIONS, ALLERGIES, ASTHMA

If your child has a condition that will require the administration of any medications during the school day, including over-the-counter and prescription medications, please visit our district Health Services information page for the required forms to submit: [Jeffco Medication Forms](#)

Parents may bring in their child's medication and signed forms to our Health Aide, Jadie, between the hours of 8:00 AM - 3:30 PM on Monday, August 16, 2021.



Students and families are always anxious to know who their teacher will be. We are very fortunate at Westridge Elementary to have teachers who are all caring, skilled professionals and are excited & highly qualified to teach at all grade levels. Teacher announcements will be made via School Messenger phone calls on the afternoon/evening of Thursday, August 12th. Please be sure you have updated your phone contact information in Jeffco Connect and checked the box under notification preferences to be allowed to receive phone notifications.

SCHOOL BIRTHDAY CELEBRATIONS

The Jeffco school district has implemented a Healthy Schools Policy whereby student birthdays will be celebrated with non-food alternatives to support the district's wellness policy. This standard is in place to limit exposure to life-threatening allergens, increase equity related to food sharing, and protect family decision-making around foods consumed.

WESTRIDGE ELEMENTARY
2021-2022 SUPPLY LIST

Copies of the 2021-2022 school supply lists are available in the school office or can be found on our website under [Supply Lists](#) . If you pre-ordered a Back-to-School Supply Pack through EPI and our PTA, those packs will be in your child's classroom at the Meet & Greet on August 16th.

SCHOOL HOURS

Westridge school hours are from 8:30 A.M. to 3:00 P.M. We will continue to have a soft start in the mornings where students with last names beginning A-L arriving from 8:05 – 8:15 A.M., and students with last names beginning M-Z arriving from 8:15 A.M. to 8:25 A.M. All students report to their teacher's exterior door to their classroom. Students will be considered tardy if not in their classrooms by 8:30 A.M. Tardy students will need to check in at the main office before going to their classrooms.

School is dismissed at 3:00 P.M. After school, students need to go directly home unless staying for a school sponsored enrichment program or have made prior arrangements to meet with a teacher. There is limited after school supervision.

ABSENCES

If your child is going to be absent or tardy at any time, you must call the Westridge Elementary Attendance Line - (303) 982-3950 Option #1 - by 9:00 A.M. (the day of the absence) to report the child's absence. Students can be excused for absences due to: funeral, illnesses, injury, legal obligations, medical procedures, or religious observations. If we have not heard from you, we will phone you to see if your child is at home. This is for your child's protection, so please assist us in this matter. For multiple day absences, calls must be made daily, or a pre-arranged absence form must be submitted to the office prior to the absence.

Vacations during the school year are discouraged. Students requesting pre-arranged absences must have prior approval from the principal. This approval must occur at least 3 days before the extended absence is to occur. In order for the absence to be excused the parent must complete a "Pre-Arranged Absence Form" and meet one or more of the following criteria: 1) good academic standing 2) has no unexcused absences 3) has four or fewer excused absences in a semester or seven or fewer in a school year. The form may be picked up at the front office. The school will follow district policy for make-up work.

THE JEFFCO PUBLIC SCHOOLS
2021-2022 STUDENT AND FAMILY HANDBOOK
(CODE OF CONDUCT/DISCIPLINE)

The Jefferson County Public Schools Student and Family Handbook (Code of Conduct/Discipline) has been prepared to provide you with information relating to your rights and responsibilities. In order for our policies and procedures to have the greatest possible positive effect, we need your cooperation.


This year the [Jefferson County Public Schools Student and Family Handbook](#) (Code of Conduct/Discipline) is being distributed electronically only and can be accessed [here](#). It is your and your student's responsibility to become familiar with the contents of the Conduct Code. If you do not have access to the internet at home you can access the Code of Conduct at school by contacting the main office.

The school will also conduct instruction and training with your student concerning the Code of Conduct/Discipline to ensure that students are aware of the contents and understand their rights and responsibilities. If you have any questions, please contact the Principal, Mr. Stein at 303-982-3975.

INFORMATION FOR FAMILIES REGARDING EMERGENCY SITUATIONS AT SCHOOL

Please review the actions our school will take in the event of an emergency at the district link below:
<https://www.jeffcopublicschools.org/services/security>

Emergency Situations at School




Information for Families


*Jeffco Public Schools is committed to ensuring the safety and security of our students, staff, and visitors.
Take a moment to review this guide to ensure you are prepared in the event of an emergency situation at school.*

What are the types of actions a school might take in the event of an emergency?


Jeffco Public Schools follows the Standard Response Protocol established by the [I Love U Guys Foundation](#).

**LOCKDOWN**


Ordered when there is a threat **INSIDE** the building. Students and staff are secured **IN** the school. Staff does not communicate during a lockdown. Parents are not allowed on site during a lockdown.

**SHELTER**


Called for when Personal protection is necessary from dangerous weather conditions such as a tornado, blizzard, or hail. May also be ordered in the event of a hazmat situation in the area.

**EVACUATION**

Ordered when people must exit the building due to unsafe circumstances. If student pick-up or off-site reunification is required, instructions will be communicated by the district.

**LOCKOUT**

Ordered when there is an issue **OUTSIDE** the building, most often police activity in the area that *could* pose a threat, or a wild animal nearby. All exterior doors are locked and "business as usual" continues inside the school.

**HOLD**

New in 2017, "Hold in your classroom" is used when there is an issue in a specific part of the building that is under control, but not yet fully removed. Business as usual within the classrooms; doors closed.

- Some situations may require a combination of actions above.
- School/district staff train yearly on emergency protocols and situation management.
- Students take part in drills throughout each school year.

What emergencies might impact a school? Which actions are taken?

Severe weather - Schools may Shelter until weather passes; could delay release of students at end of day until safe to exit building.

Fire or Hazmat Situation in the Area - Evacuation or Shelter, depending on location and severity of fire/hazmat issue.

Threat of Violence or Weapon on a Person - Lockout, Lockdown, or Evacuation, depending on the situation.

Intruder - Requires an immediate Lockdown; an emergency notification will be sent to parents by the district with any instructions.

Police Activity in the Area - Usually a Lockout; action may be taken at the direction of law enforcement or any staff member at the school.

What do I need to know, do, and not do?

- If you're at a school and an emergency occurs, follow protocol with students and staff.
- We know families want information right away. Our experience has taught us initial information is almost always incorrect. Please know, our security and administrative staff are working hard to determine what the *real* situation is and will communicate with families as soon as information is verified as accurate and next actions have been determined.
- Do not call the school or security staff, as they are working on the situation and ensuring your student's safety. Do not go to the school; this may interfere with procedures. Only public safety personnel will be allowed in/near a school during an emergency situation.
- We understand you may want to communicate with your student during an emergency, however, please refrain from calling; it may prevent him/her hearing important, possibly life-saving, instructions.
- It is vital parents and guardians keep their information updated in [JeffcoConnect](#). We will utilize email, text messaging, and phone calls to communicate with you.
- The fastest way to get information in an emergency situation is to follow us on Twitter ([@JeffcoSchoolsCo](#)) and Facebook ([@JeffcoPublicSchoolsColorado](#)). It is our first and fastest means of getting messages out. Also, check our website for alerts posted on the main page.

www.jeffcopublicschools.org

If you have questions regarding our district emergency procedures, contact 303.982.6808.

WESTRIDGE ELEMENTARY DRESS CODE

Jefferson County School Board policy states: "The Board of Education recognizes that responsibility for the dress and appearance of students generally rests with individual students and their parents, and that students may wish to express themselves by the manner of their dress and appearance. Students shall not, however, wear clothing or effect an appearance at school or school-sanctioned activities or events that is or will be disruptive to the educational environment. Students also shall not wear clothing or effect an appearance that compromises the maintenance of a safe and orderly school."

Inappropriate dress may include but is not limited to:

- * Head covering for both boys and girls such as hats and/or bandanas.
- * Belly buttons showing - tops must be long enough that the belly button doesn't show
- * Inappropriate neckline
- * Tank tops - straps must be at least two inches
- * Muscle or mesh shirts
- * Short shorts/skirts (must be at least finger-tip length)
- * Chains or spikes
- * Sagging pants or shorts with underwear showing
- * Inappropriate language, messages, or graphics on clothing including alcohol or tobacco advertising

Violation of these expectations will result in students being asked to cover or remove inappropriate clothing, a phone call home for more appropriate clothes, or dismissal from school until clothing can be changed. Continued distraction to the learning environment may result in a parent conference and/or suspension.

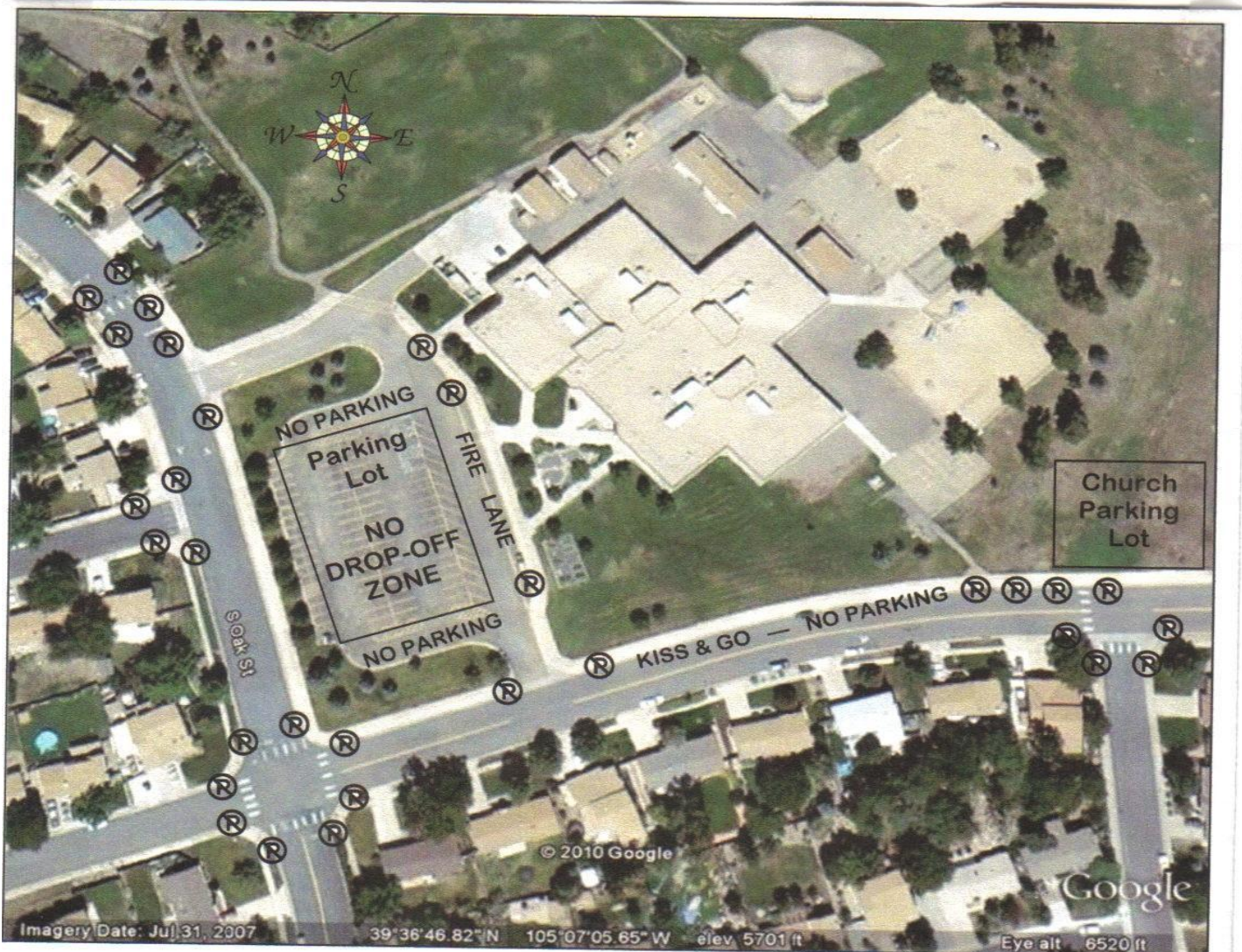
Please help us protect your child by insisting that adequate clothing be worn during the winter. We will attempt to send all children outside except on the very coldest, wettest days. A breath of fresh air does wonders for wiggles.

FOR THE SAFETY OF ALL CHILDREN

1. **NO U-TURNS ON ALAMO** from either side of the street. This is a posted county regulation.
2. **WATCH YOUR SPEED.** Please remember, this is a school zone. The speed limit is 20 miles per hour.
3. **PULL FORWARD AT KISS & GO.** Please pull as far to the west as possible. This may mean going around cars that are dropping children at the east end. Do not stop and let your child(ren) out where there are cones.
4. **KISS & GO IS FOR QUICK DROP-OFF.** Once your child(ren) has exited the car, you need to leave the kiss & go area. You may not sit there and watch your child walk to class. As the driver, you are not to exit the car. Children must exit the car on the passenger side. If you cannot adhere to these rules, you need to make alternate plans for drop-off.
5. **NO DROP-OFF IN THE PARKING LOT.** If you are entering the parking lot, you must park in a legal parking space and walk your child(ren) across to the sidewalk in front of the school. Children may not walk across the parking lot and/or through the bus zone without an adult.

COLORADO STATE LAW PROHIBITS PARKING IN THE FOLLOWING PLACES:

- a. On a sidewalk
- b. Within an intersection
- c. On a crosswalk
- d. Within 5 feet of a public driveway
- e. Within 15 feet of a fire hydrant
- f. Within 20 feet of a crosswalk
- g. Within 30 feet of any traffic signal, stop sign or yield sign.



Kids Love These Programs!

Foothills Park & Recreation District's Children's Programs have been providing Before & After School Care for over 35 years and are licensed by the Colorado Department of Human Services. We are committed to providing families with safe and healthy recreational and educational opportunities and strive to provide a safe, caring, nurturing environment by employing the highest provider standards. These programs are designed to promote and build self-esteem, facilitate positive development through healthy interactions and to provide a continuum of care to assist children in becoming positive and healthy individuals.



All of our school age care programs provide children with fun enrichment activities that stimulate learning and imagination, encourage physical skill development and promote positive social skills.

Come play a game of chess, capture the flag, basketball, paint a collage, have some fun cooking with a friend, be an actor/actress for the day or just relax and do some reading or homework. The activities are endless.

DATES TO REMEMBER!

WINTER BREAK CAMP

Information will be available in **OCTOBER 2021**

SPRING BREAK CAMP 2022

Information will be available in **JANUARY 2022**



www.foothills.org
JUNE 2021

Before & After School Programs

2021 - 2022 School Year

Enrollment begins
JULY 6



**Fun enrichment activities
that encourage
learning & imagination!**



Program Information

Foothills Children's Programs offers Before & After School Programs for children in Full Day Kindergarten through Grade 5 or 6, depending on the oldest grade offered within the elementary school. Programs operate Monday through Friday from 6:45 a.m. until school commences and from school dismissal until 6 p.m. (We do not provide preschool care or wrap around care for ½ day Kindergarten.)

We offer year round programs and provide full day camps on most student non-contact days, vacation breaks and during the summer.

Prices & Locations

An annual non-refundable Enrollment Fee (\$60/child or \$80/family) is required at the time of enrollment. This fee is transferable from the 2021 Summer Camp Program. Annual Enrollment Fee covers programming from June 1, 2021 to May 31, 2022.

Per Day/Tuition is based on the number of days a child attends. (NOTE: Prices are subject to change based on school bell time changes.)

Prices Apply to Youngest Child in the Family Enrolled in Program. NOTE: Additional siblings enrolled receive a discount of 5% OFF tuition fees.				
Columbine Hills Dutch Creek Governor's Ranch Mt. Carbon (**Ridge) Ute Meadows Westridge	Time of Care ▶	Before School Care	After School Care	Full Day Care
	Daily Rate	\$9.50	\$15.50	\$37
	Drop-in Rate	\$12.50	\$18.50	\$45
Deviny Hutchinson Normandy Peiffer Powderhorn (**Ridge) Stony Creek	Time of Care ▶	Before School Care	After School Care	Full Day Care
	Daily Rate	\$11.50	\$13.50	\$37
	Drop-in Rate	\$14.50	\$16.50	\$45
Collegiate Academy	Time of Care ▶	Before School Care	After School Care	Full Day Care
	Daily Rate	\$7.50	\$16	\$37
	Drop-in Rate	\$10.50	\$19	\$45

** For MT. CARBON and POWDERHORN, Before & After School Programs will be held at: Ridge Recreation Center (6613 S. Ward Street, Littleton, 80127)

MONTHLY CALENDAR SELECTION:

Calendars open at 8 a.m. on the 15th of each month for the upcoming month. Parents/Legal Guardians are encouraged to select schedules no later than the last day of the month to receive the early bird rate. Any days selected after that time will be charged an additional fee per session.

Foothills Children's Programs does not issue credits, refunds or transfers for any missed days of care.

Drop-in care is available (if space allows) for an additional fee per child per session.

Please see the Parent Handbook for additional payment policies & procedures. Parent Handbooks are available at all program sites and at www.ifoohills.org.

To Enroll

Parents are required to complete and submit the necessary Enrollment Forms on-line at <http://www.ifoohills.org/schoolage> for each child a minimum of 48 business hours prior to attendance. (To attend care on the 1st day of the school year, August 17, 2021 – Enrollment must be completed and paid for by August 9, 2021).

Enrollments received after 5 p.m. will be considered the next day of business.

Parents are required to submit the following, prior to child's attendance:

- Annual non-refundable Enrollment Fee (\$60/child or \$80/family)
- Immunization Records for each child
- Physician's Report for children 7 and under only (form located on our website)
- Permission for Administration of Medication if necessary (forms located on our website)

Contact Us

For more information about Before & After School Programs, please call 303-409-2511.

OR

Email us at childrensprogram@fhprd.org

